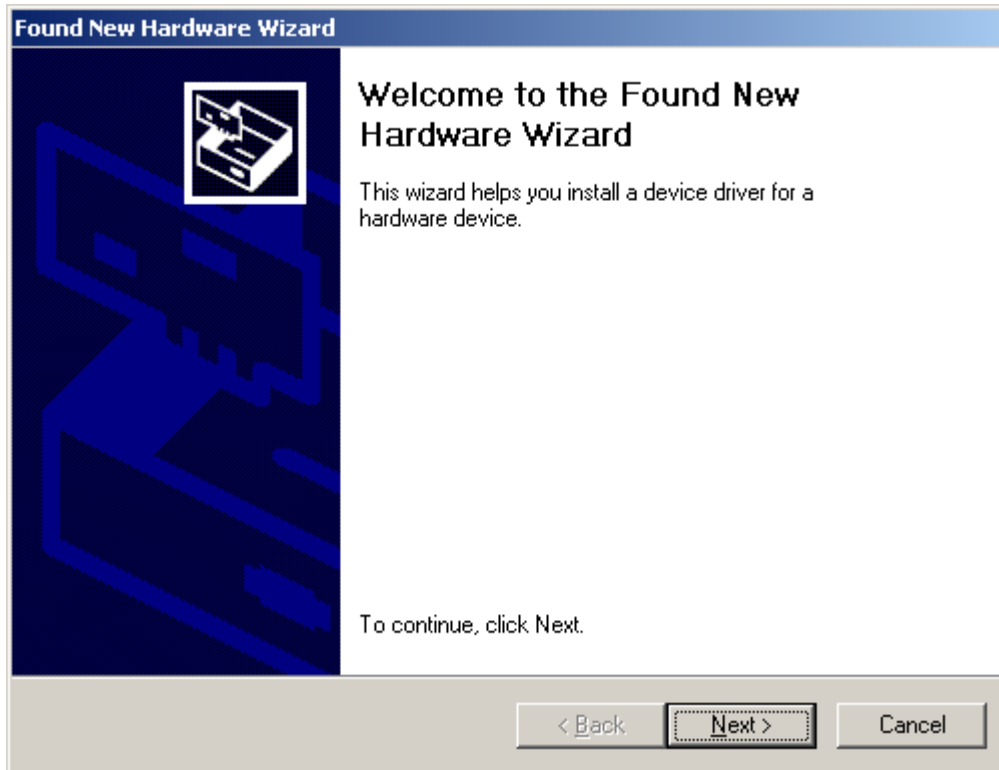


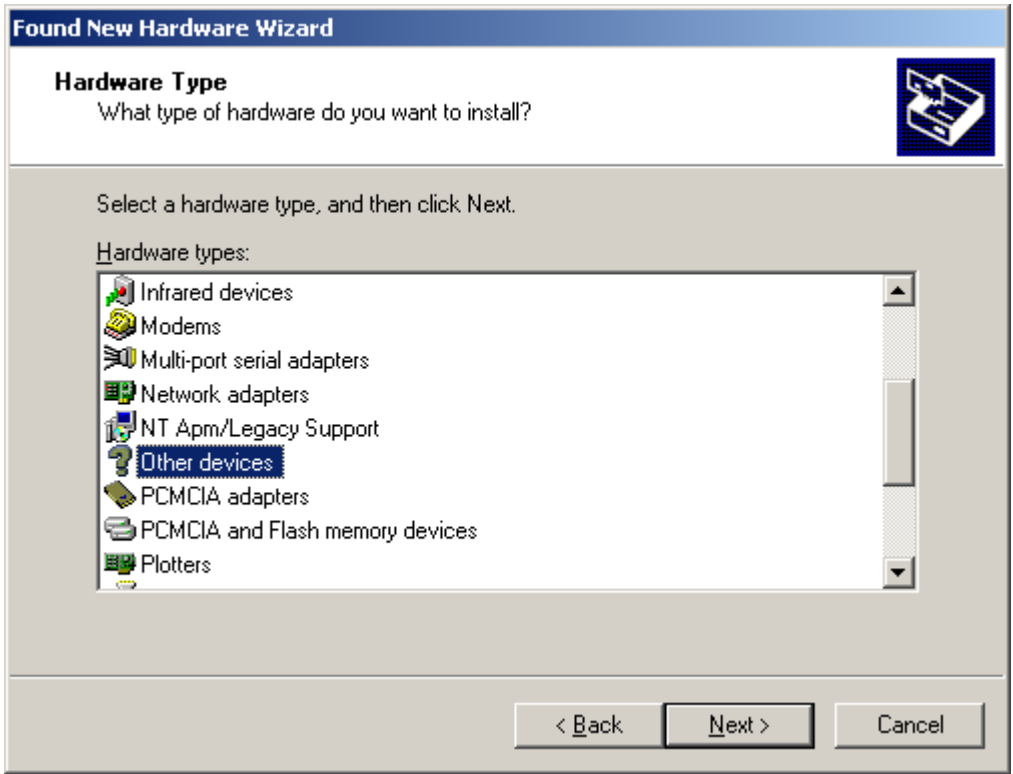
SeisNet Plotter Driver Installation – Windows 2000



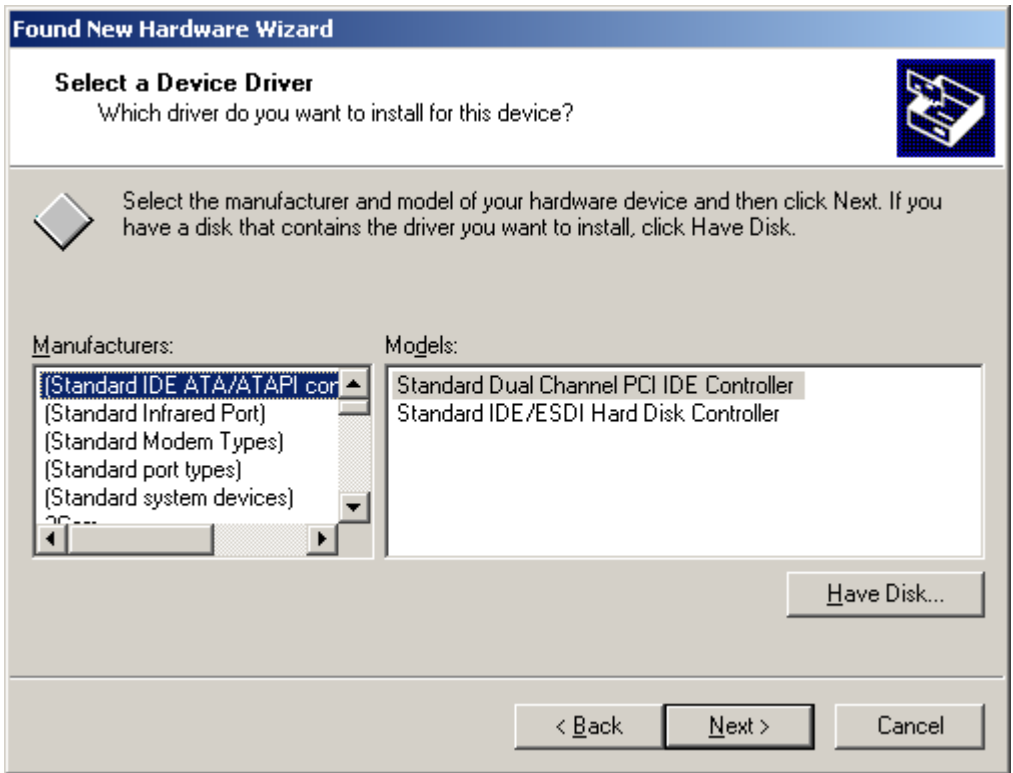
Next



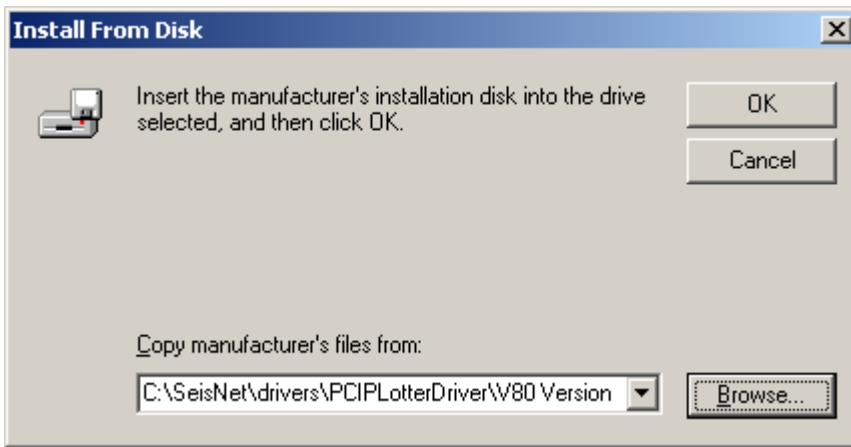
Select **Display a list** then **Next**



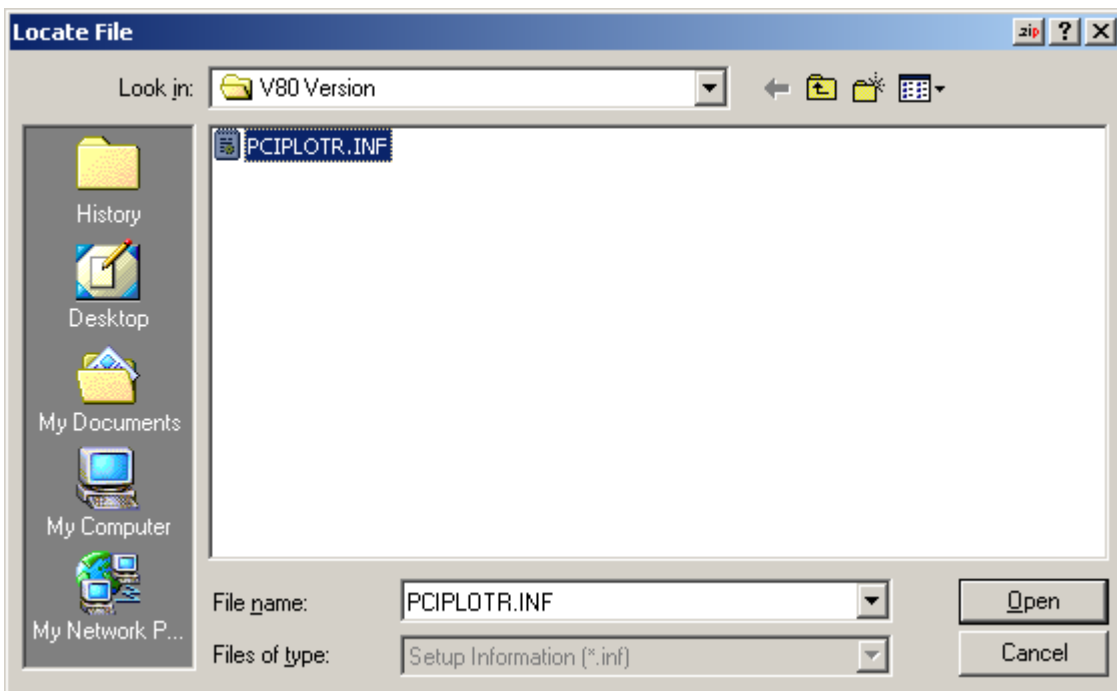
Select **Other devices** then **Next**



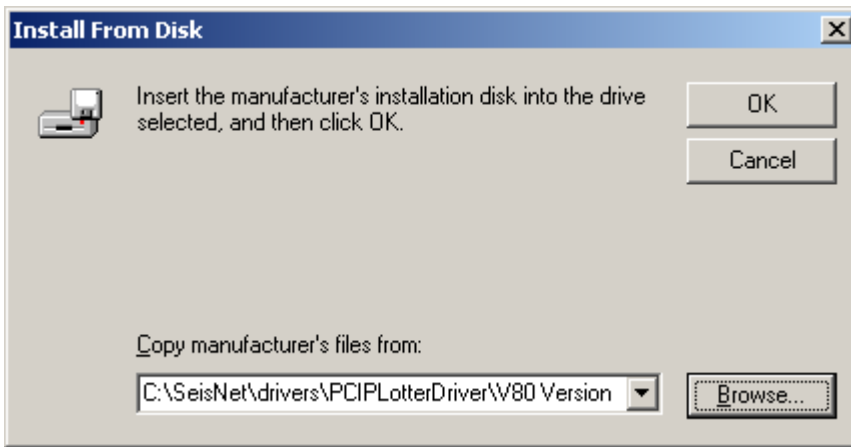
Select **Have Disk** then **Next**



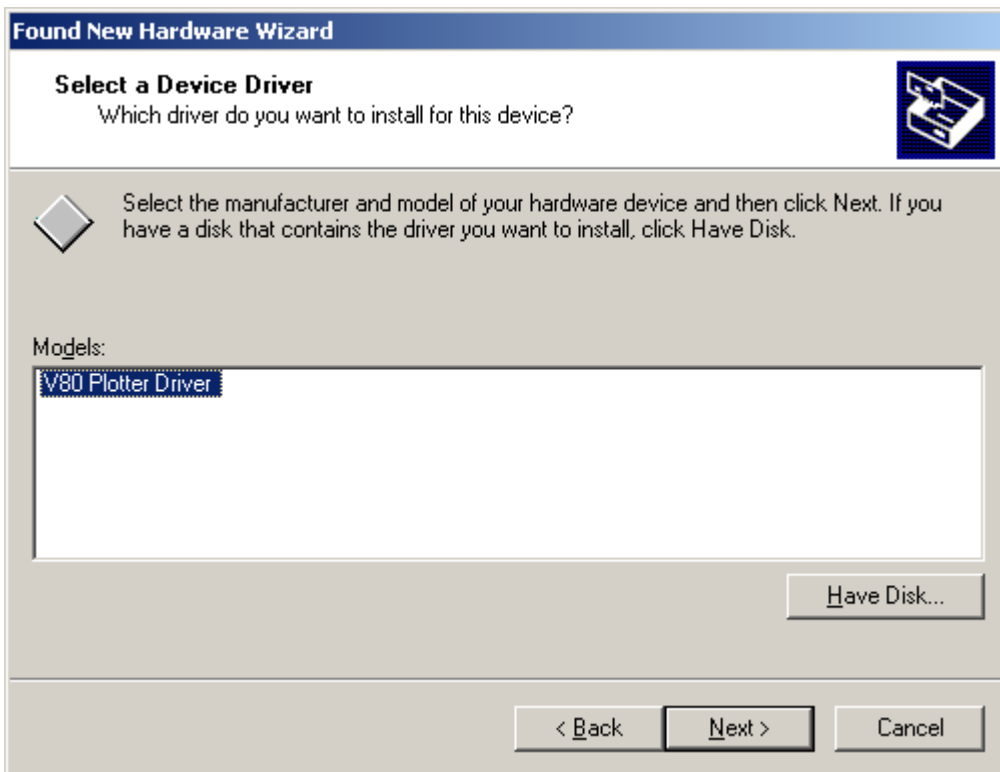
Browse to location of SeisNet PCIPlotter\V80 Version\PCIPLOTR.INF. Can be found under drivers directory on SeisNet CD or under c:\seisnet\drivers if loaded on the c: drive.



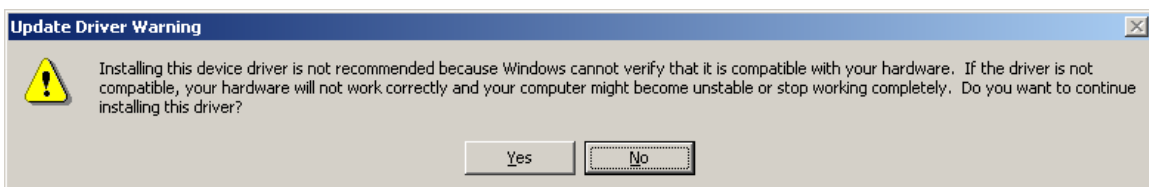
Open



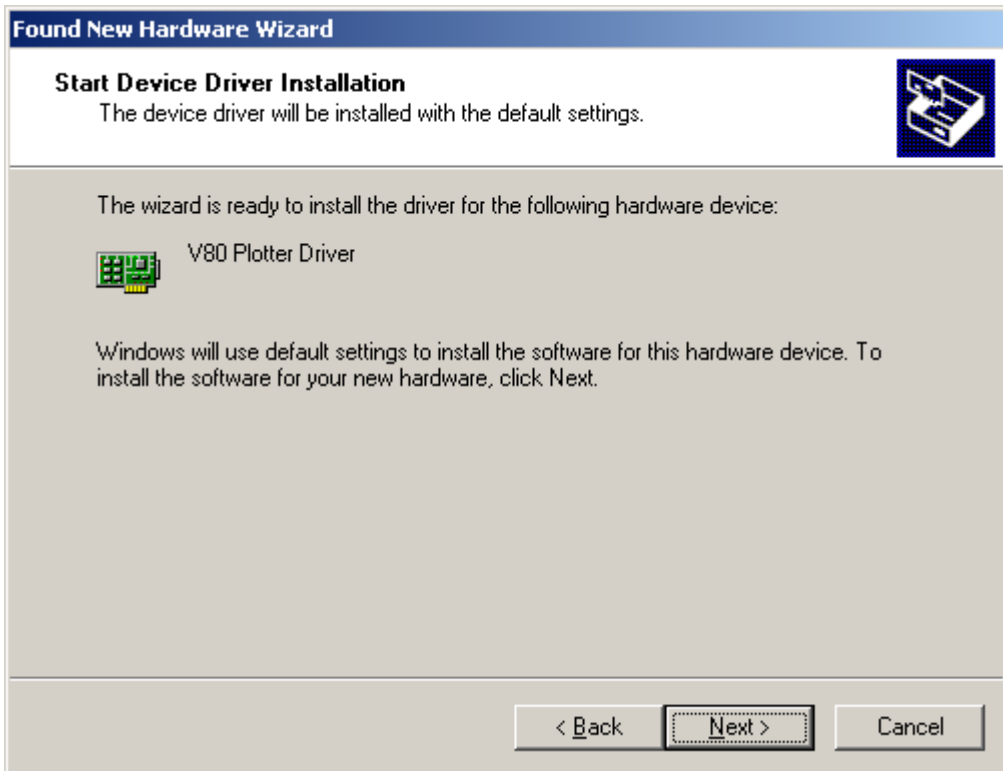
OK



Next



Yes



Next



Finish