

DCT Configuration Utility

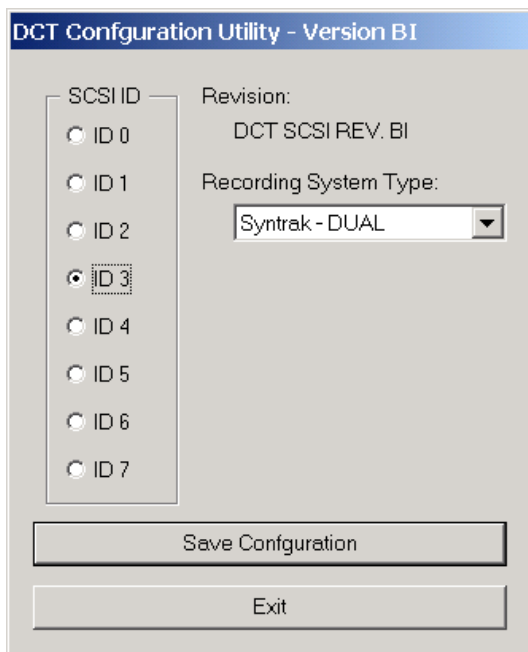
This utility allows the user to set the host system type and SCSI ID address for the DCT card and can be found on the SeisNet CD in the SeisNetTools directory.

There are several versions of this program due to the continued expansion of recording systems supported. It is essential to use only the version that matches your DCT card revision as labeled on the card. The revision is also read and displayed in the DCT Configuration Utility dialog box as displayed below, and should match the version indicated in the dialog box header.

The DCT card version in this example is BI and the correct DCT Configuration Utility program file to use on this version card would be DCT_CFG_BI.exe

For recording systems requiring dual tape drive emulation, the SCSI ID setting represents the first of two sequential ID's used.

E.g. Syntrak – DUAL system type, a setting of ID 3 would create emulated drives with ID's 3 & 4.



Note: After changing settings, it is necessary to reboot the SeisNet system to activate new settings.